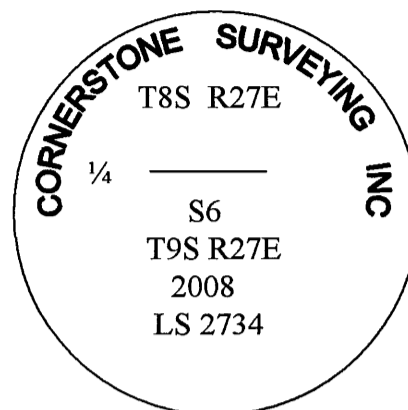


CERTIFIED RECORD OF LAND CORNER MONUMENTATION

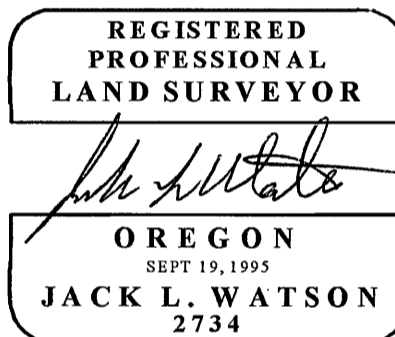
History of original corner establishment:

Not previously established.



Description of corner evidence found:

Not previously established



Renewal Date 6/30/2008

Description of monument and accessories set at corner location:

I established the corner on the township line at the mid-point between the NE and NW corners of Section 6. I set a 2 1/2" x 30" aluminum pipe with attached 3 1/2" aluminum cap, surrounded by a mound of stone. The cap is stamped as shown in the diagram.

From which:

- A 18" Juniper bears S10°W, 71.5 ft., marked 1/4S6BT.
A 11" Juniper bears S45°W, 57.6 ft., marked 1/4S6BT.
A 26" Juniper bears N89°W, 43.3 ft., marked XBT.
A 27" Juniper bears N44°W, 23.0 ft., marked XBT.

I used a steel tape measuring to a 50d nail driven in the side center at the root crown of the BT's and magnetic compass, with 18° E. declination. See Grant County Survey No. 1839.

Date: April 2, 2008

Office of SURVEYOR County of GRANT
State of OREGON, I hereby certify that the within instrument was filed in this office
for record on the 7 day of APRIL, 2008.
[Signature] by [Signature]
(COUNTY OFFICIAL) (DEPUTY)